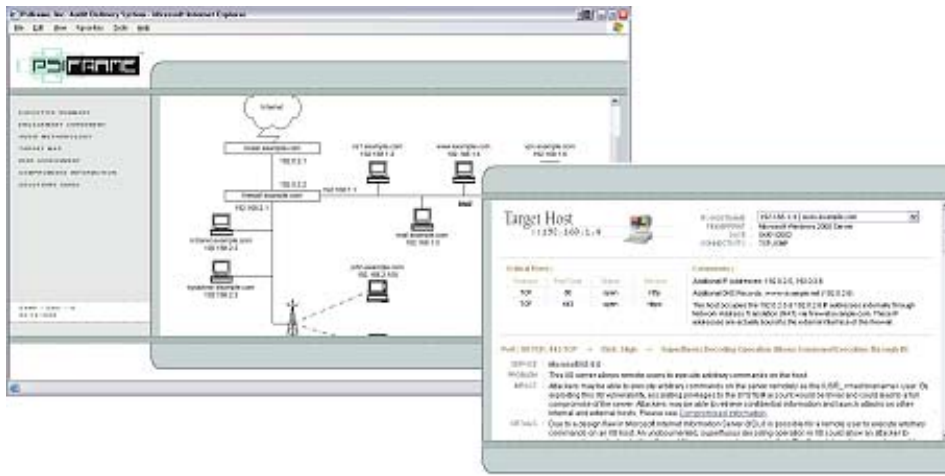




RiskPoints™

Psiframe's Network Vulnerability Assessment

The highly regarded RiskPoints findings report is an exclusive result of Psiframe's comprehensive Network Vulnerability Assessments. It provides step-by-step instructions for mitigating all vulnerabilities found throughout the network infrastructure, organized for ease of navigation and follow-up review.



Executive Summary

Results are summarized in non-technical terms and a description of the overall state of network security is provided on a page that stands alone for independent distribution.

Audit Description

A brief overview of the specific testing performed on systems.

Network Discovery Map

An interactive, graphical network map of all hosts discovered during the NVA. The hyperlinked map enables security personnel to quickly jump to specific hosts for detailed technical advice.

Host-by-Host Security Evaluation

Technical information collected from each host is shown on the Network Discovery Map. Vulnerability definitions and suggested solutions or work-around information is tied to Vulnerability Risk Rankings.

Compromised Information

Data captured during the NVA including information such as: Usernames and/or passwords of privileged accounts, system and application configuration information that may lead to further compromise, confidential files, intercepted e-mail or other communications.

Risk Assessment

A view of the risks the organization may face including an Asset Risk Ranking chart with links to specific threats and the vulnerabilities that cause them.

Solutions Guide

A guide that lists both general and specific suggestions for securing networks. Preventative and Best Practices advice is provided including suggestions for: Replacing insecure hardware and software, revising software patch levels, improving network traffic security, modifying network designs and configurations, ensuring a strong network security infrastructure, improving employee security awareness, protecting corporate and customer data.

What Clients Are Saying About Psiframe's Results:

"I like the format of the report and I like how you tie back the threats to vulnerabilities."
- IT Director

"I was really pleased with the process."
- Vice President, Operations

"We received real VALUE from this engagement. We learned what we are doing well, and where we can make improvements, especially with internal controls."
- Vice President, CFO

"The whole process has been very eye-opening for us. I was happy to see how much diligence you put into it."
- IT Administrator

"We have gained invaluable knowledge and experience working with you and your team."
- Network Manager

"This was well worth our time."
- Vice President, IS Director

Executive management and IT staff members are invited to review and evaluate an interactive example via conference call. To schedule a 30-minute online demonstration, please email fhoborn@psiframe.com.